



HISTORY OF ISLAMIC ARCHITECTURE IN EGYPT

*FORM ARCHITECTURAL OF
MOSQUES IN THE ISLAMIC
ARCHITECTURE*

*DR/ KAMAL MAHMOUD
ELGABALAWY*

KAMAL_ELGABALAWY@YAHOO.COM

**THE REFERENCES TO MULTIPLE SOURCES ARE TEXT & FIGURES
(SKETCHES, DRAWINGS, PICTURES, PHOTOS,...ETC.)**

ALL THE RIGHTS BELONG TO ORIGINAL AUTHORS

History of Architecture

1-Rashidun Caliphate - 632

2-Fatimid - 969

3-Ayoubi - 1171

& Umayyad Caliphate-662

& Abbasid Caliphate -750

Prototype 1

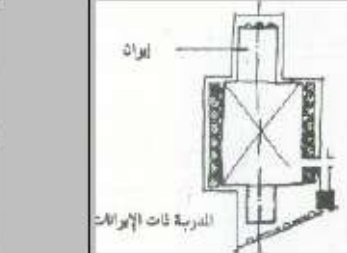
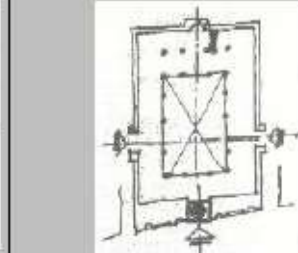
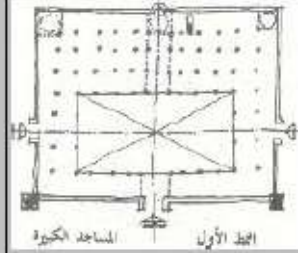
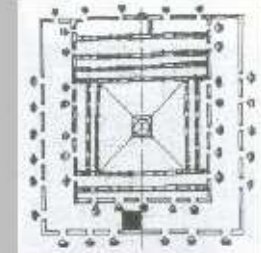
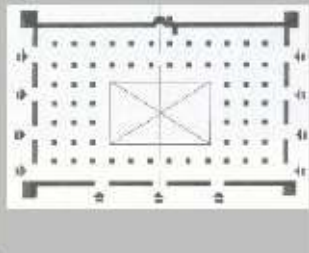
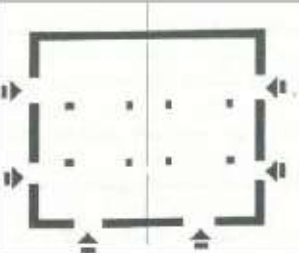
Prototype 2

Prototype 3

Prototype 1

Prototype 2

Prototype 1



4-Mamluk - 1250

5-ottoman - 1517

6-Mohamed Ali - 1805

Prototype 1

Prototype 2

Prototype 3

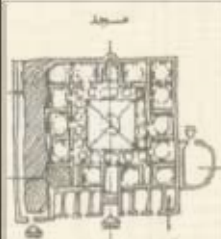
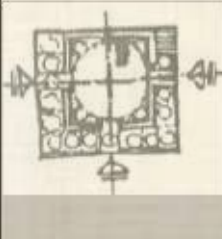
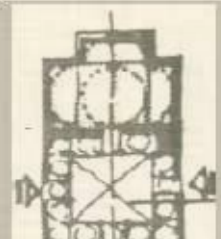
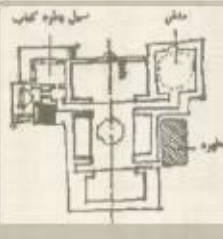
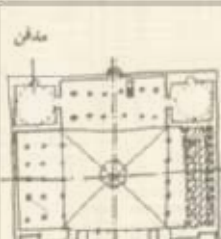
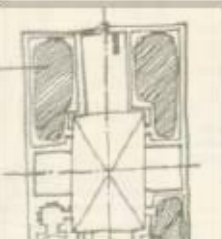
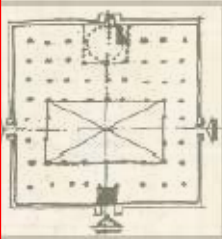
Prototype 4

Prototype 1

Prototype 2

Prototype 3

Prototype 1



History of Architecture

1-Rashidun Caliphate - 632

& Umayyad Caliphate-662

& Abbasid Caliphate -750

Prototype 1

Prototype 2

Prototype 3

2-Fatimid - 969

Prototype 1

Prototype 2

3-Ayoubi - 1171

Prototype 1

4-Mamluk - 1250

5-ottoman - 1517

6-Mohamed Ali - 1805

Prototype 1

Prototype 2

Prototype 3

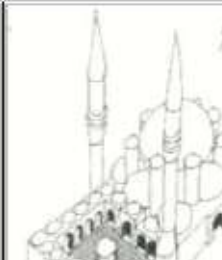
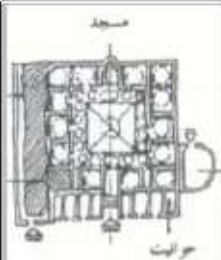
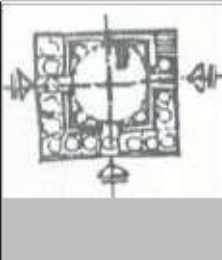
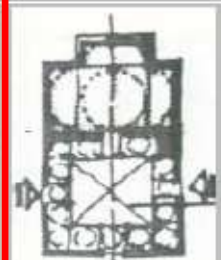
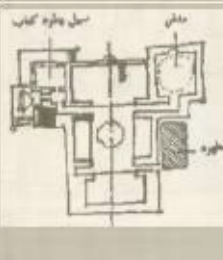
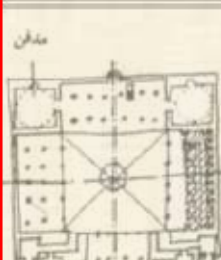
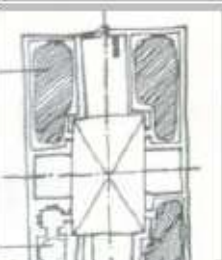
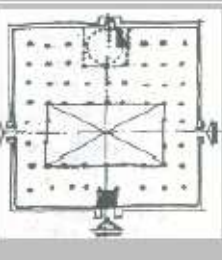
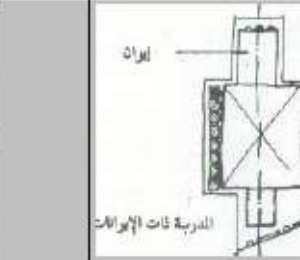
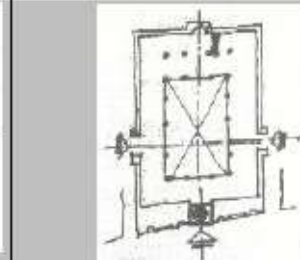
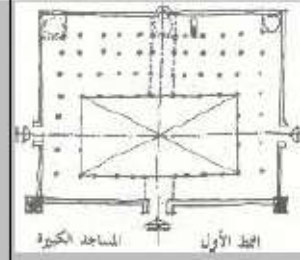
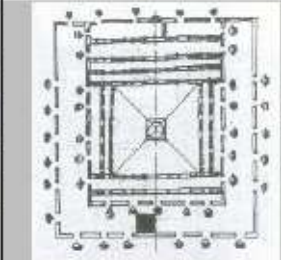
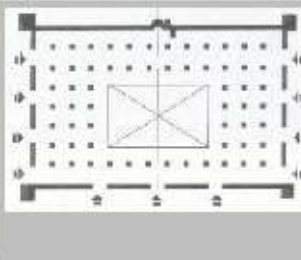
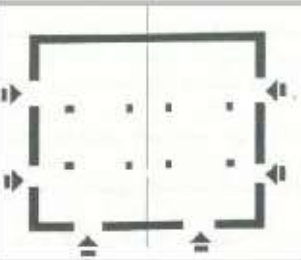
Prototype 4

Prototype 1

Prototype 2

Prototype 3

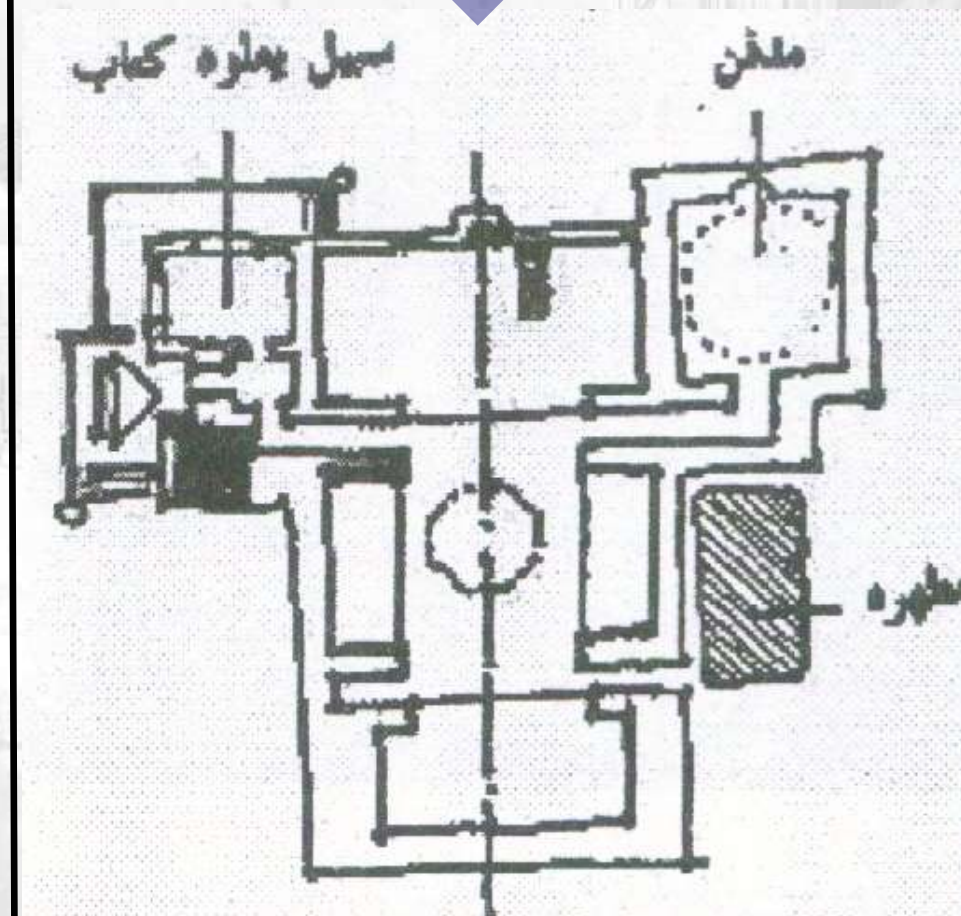
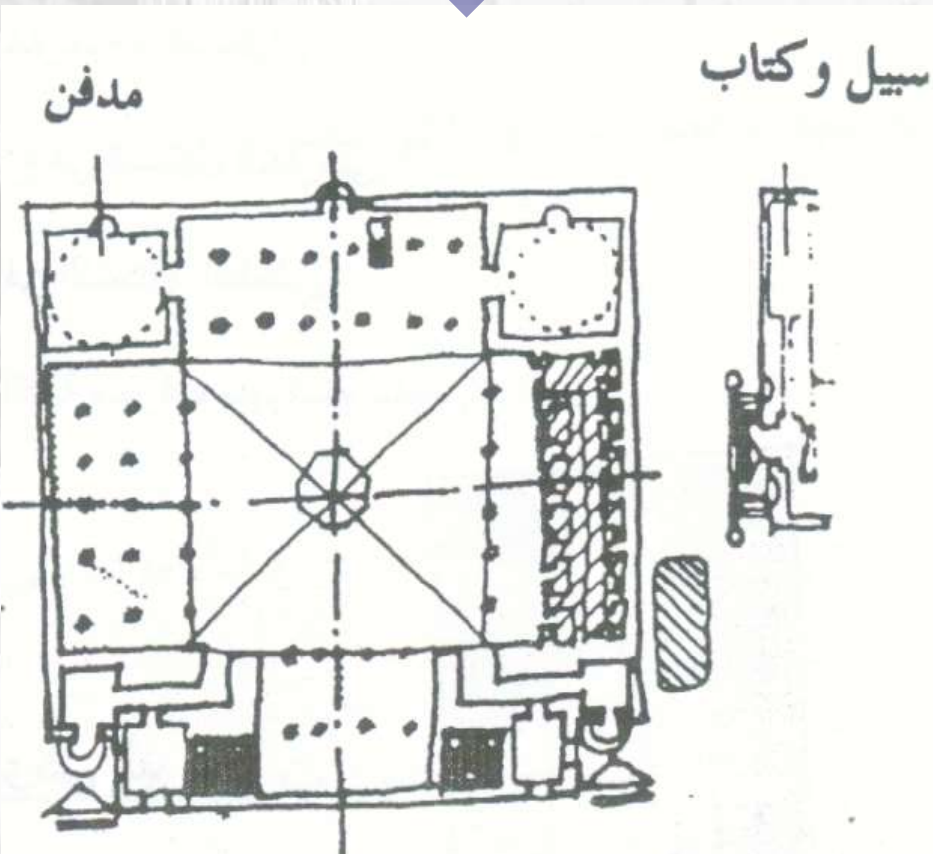
Prototype 1



4-Mamluk period - 1250

Prptptype
(1)

Prptptype
(2)



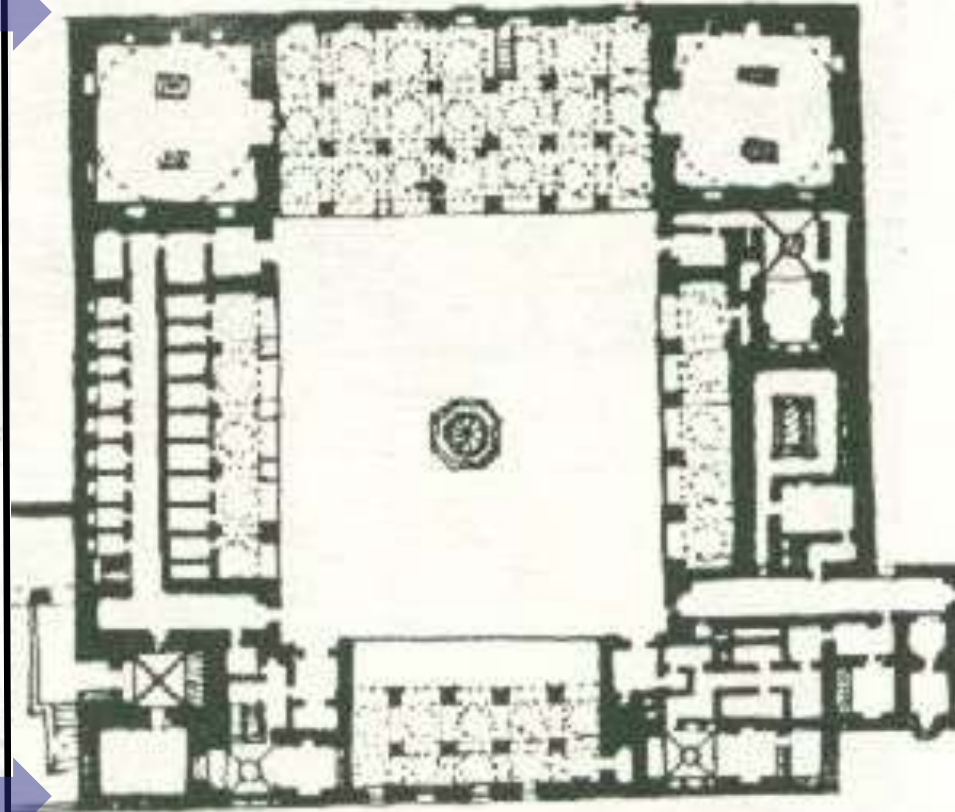
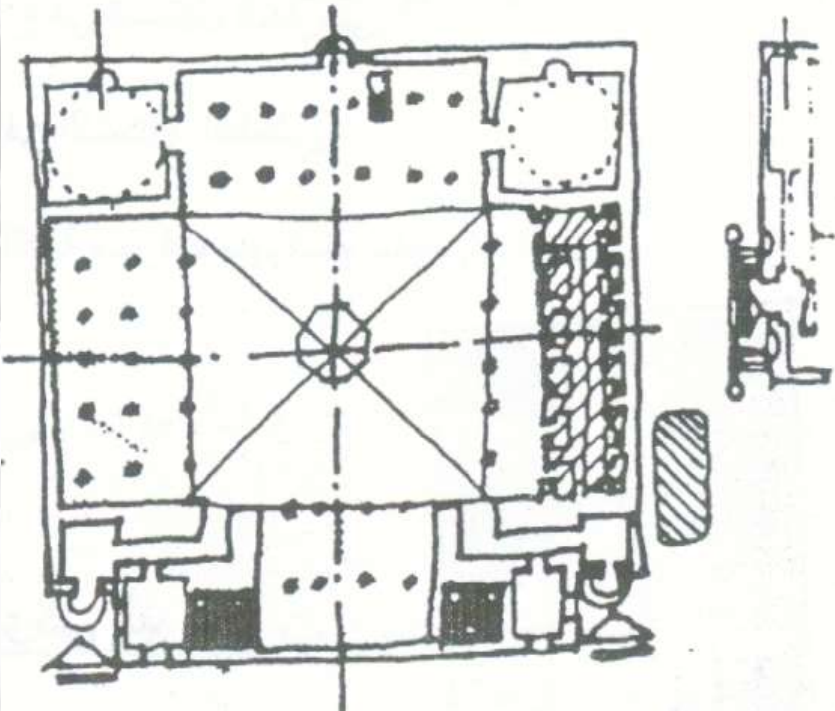
4-Mamluk period - 1250

Prpttype
(1)



مدفن

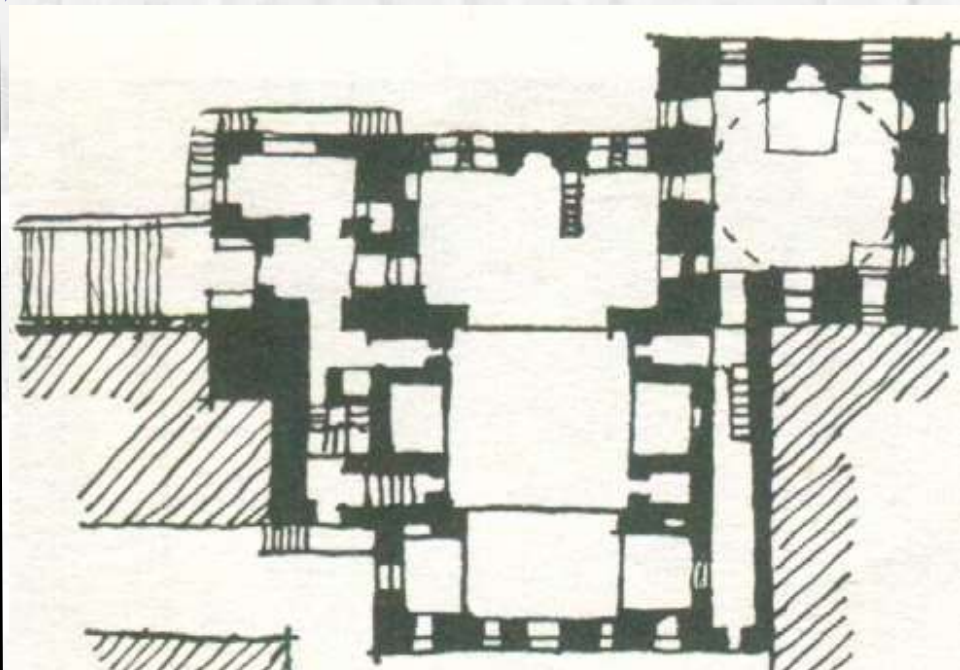
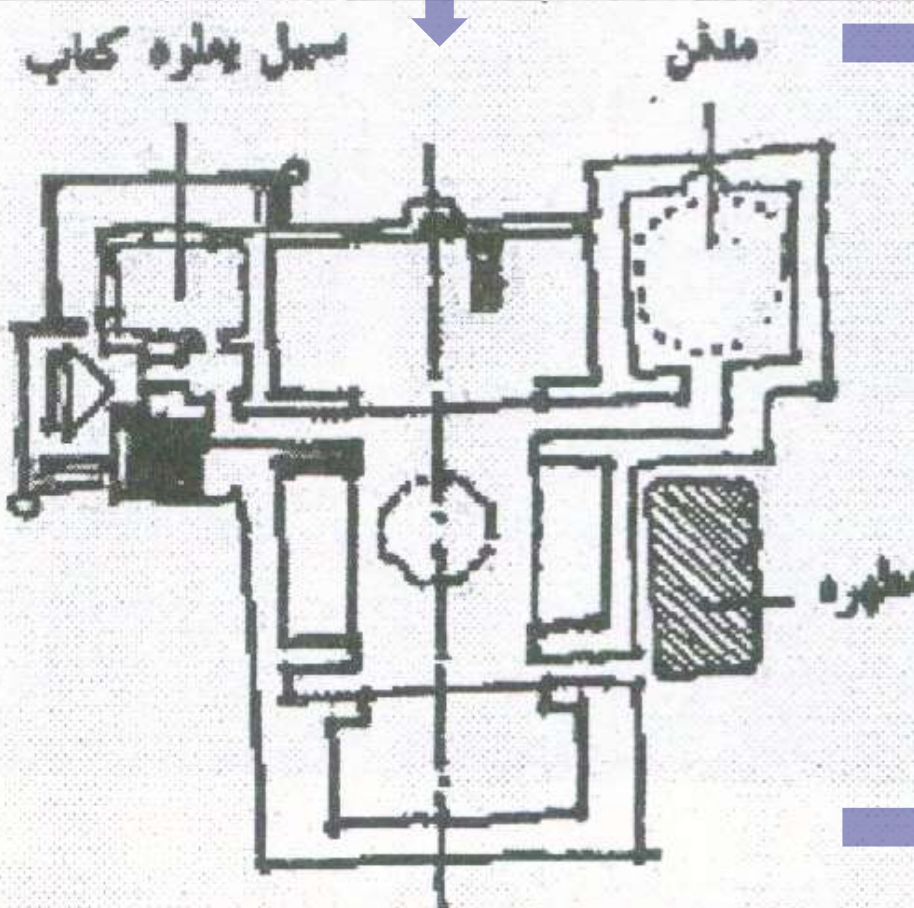
سبيل و كتاب



Khanqah al-Nasir Faraj ibn Barquq

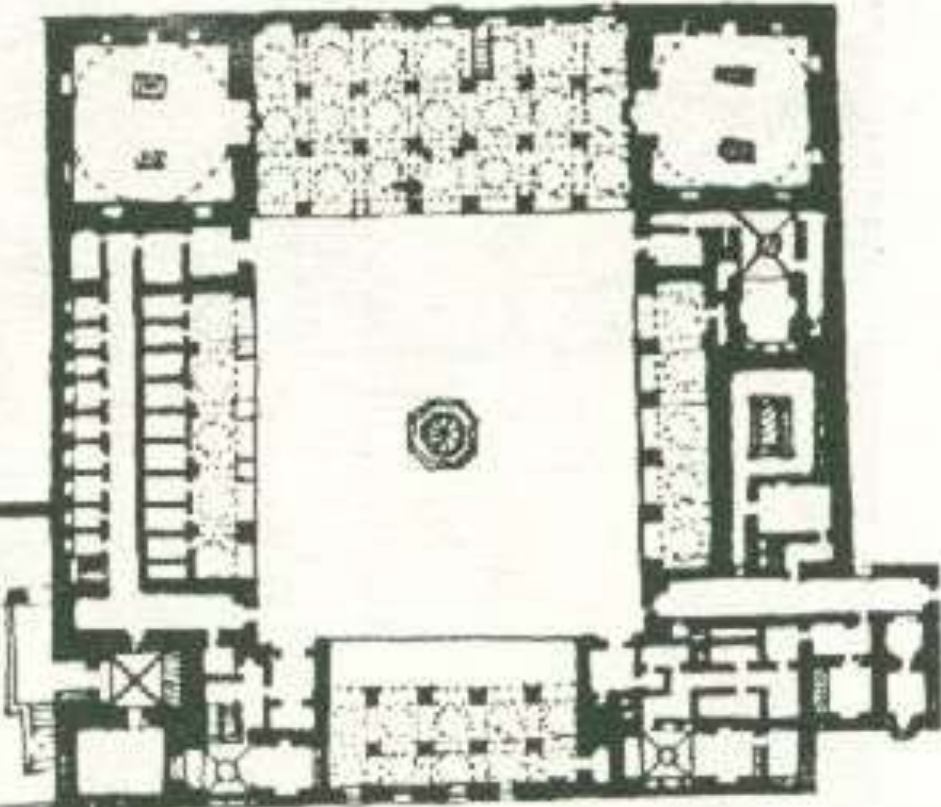
4-Mamluk period - 1250

Prpttype
(2)

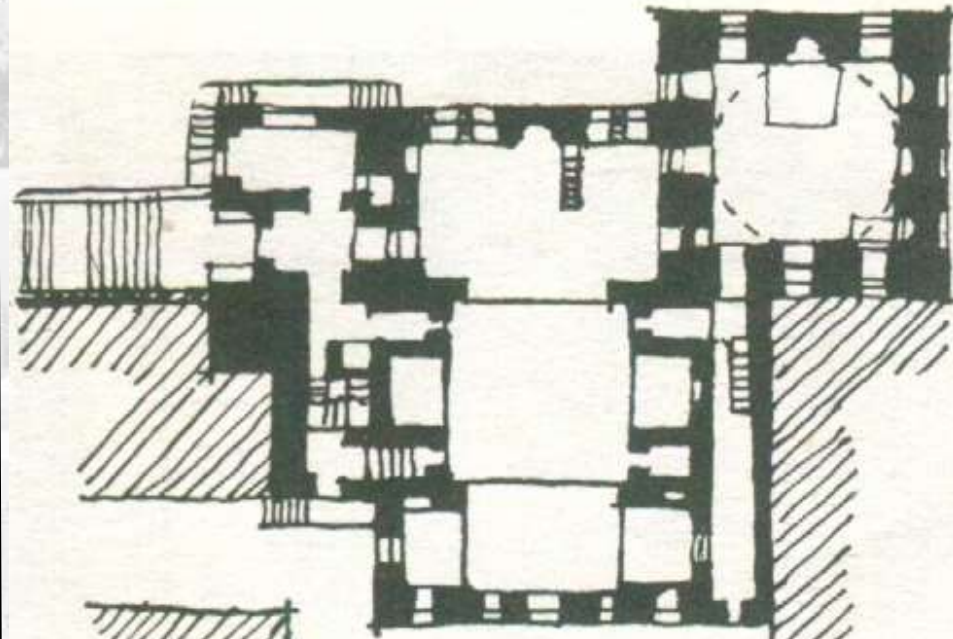


Floor plan of Sultan Qaytbay Funerary Complex at the Northern Cemetery, Cairo

4-Mamluk period - 1250



Khanqah al-Nasir Faraj ibn Barquq



Floor plan of Sultan Qaytbay
Funerary Complex at the Northern
Cemetery, Cairo



HISTORY OF ISLAMIC ARCHITECTURE IN EGYPT

THANK YOU

FORM ARCHITECTURAL OF
MOSQUES IN THE ISLAMIC
ARCHITECTURE

DR/ KAMAL MAHMOUD
ELGABALAWY

KAMAL_ELGABALAWY@YAHOO.COM

**THE REFERENCES TO MULTIPLE SOURCES ARE TEXT & FIGURES
(SKETCHES, DRAWINGS, PICTURES, PHOTOS,...ETC.)**

ALL THE RIGHTS BELONG TO ORIGINAL AUTHORS